

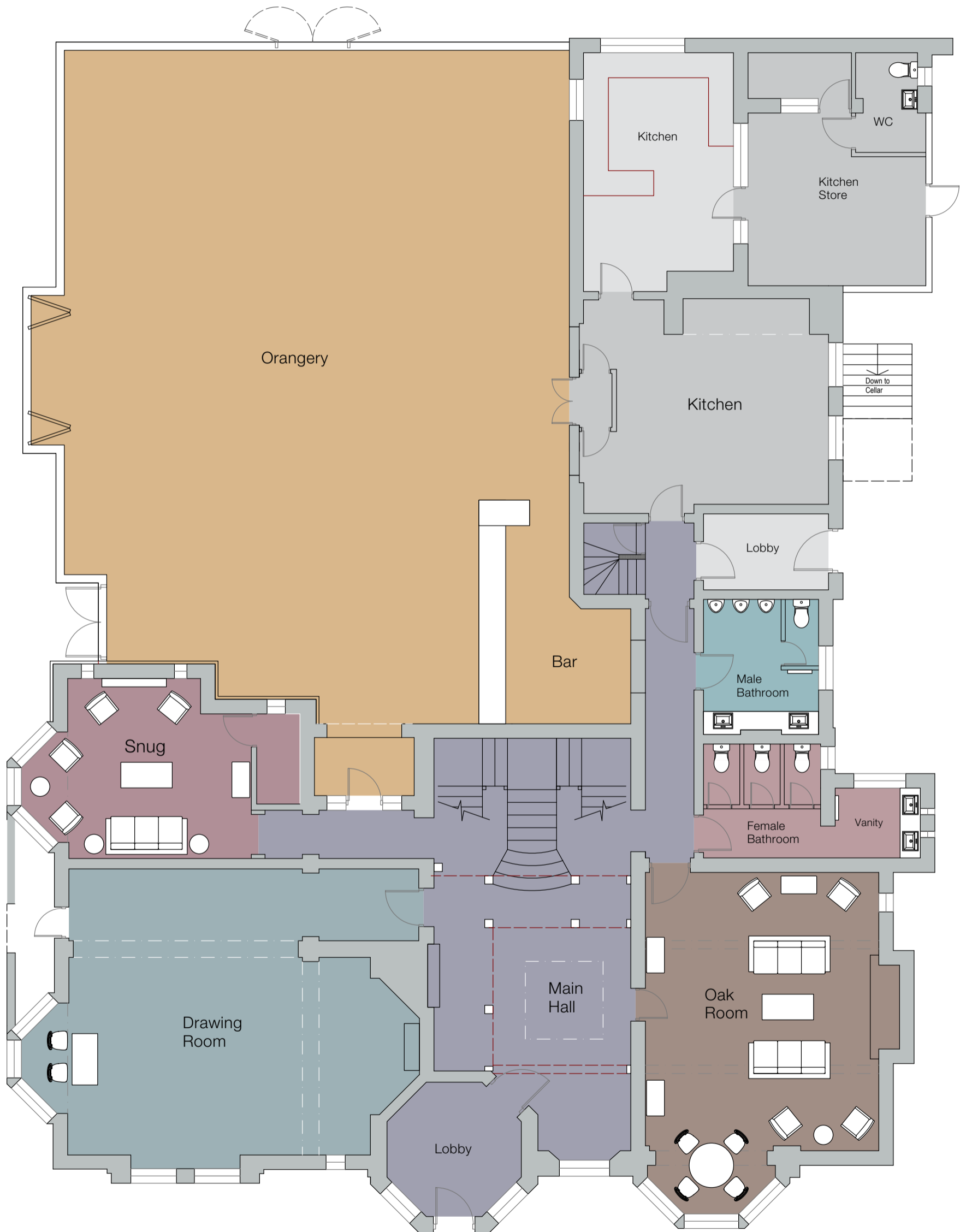


# BADDOW PARK HOUSE

Your private wedding venue

## Ground Floor Plan

2020





## BADDOW PARK HOUSE

Your private wedding venue

**As you make your way on to the Baddow Park Estate and through the parklands, you can catch a glimpse of the iconic lantern.**

The sweeping driveway will take you round to the House where you and your guests will be greeted by a member of the Baddow Park House team. The House itself was built around 1890 and has been a family home until last year. It has been bought by private owners and sympathetically renovated into a luxury wedding venue.

Entrance to the House is via the lobby and into the Main Hall...

### THE MAIN HALL

Comprises an open fireplace, large stained-glass window and amazing galleried landing. This room is perfect for hosting welcome drinks and photo opportunities alike. With detailed hand stencilling and oak panelling this room is sure to wow your guests upon arrival.

### THE OAK ROOM

From the Main Hall you enter into the Oak Room. This grand reception room has an open fireplace and a large bay window. Complete with luxury furnishings, this is the perfect spot for guests that may want some quieter space to catch up. This room is licensed so can be used for smaller ceremonies of up to 50 guests.

### THE SNUG

The snug has been designed with the Groom in mind! With a masculine feel to the décor, the Groom and his Groomsmen can relax in here prior to the ceremony. With an open fire-place and drinks trolley, this is the ideal space to reflect, have a drink with the groomsman or have a last minute run through the speeches!

### DRAWING ROOM

This light and elegant room is accessed via the Main Hall. With large windows encapsulating the picturesque views over the parklands and ornamental gardens, the Drawing Room is just perfect for your ceremony. Seating 80 guests in a variety of settings, choose to say your vows in front of a large open fireplace, a grand bay window or the stunning back drop of the parklands and driveway.

### THE ORANGERY

Bi-fold doors open out to a large terrace

Recently renovated for 2020, the Orangery promises to be the hub of any wedding day! This large, light space with views over the rose-decked terrace and vineyards beyond is truly impressive. Seating 120 guests on round tables or 150 banquet style, this room can cater for wedding parties of any size. The bi-fold doors open out on to the terrace to create a unique indoor/outdoor feel. There are another set of doors leading to a small balcony area, which is great for a photo opportunity with the pond and vineyards providing an incredible backdrop. The Orangery houses the impressive bar which has a hint of an art-deco feel to it. The bar is stocked with a large range of drinks and our resident caterers 'Abigails and Co' provide an in-depth knowledge of wines and cocktails to complement your dining experience. A discrete clear down of table and chairs, transforms this room for the evening's celebrations with room for a DJ, Band and dancefloor meaning a large space for you and your guests to party together!

### THE GARDENS



**The gardens at Baddow Park House have been extensively planned to provide the best outdoor space for your wedding day.**

A large terrace area made of luxury, natural stones leads off of the Orangery and out to some truly unique features. An outdoor wedding is often much more versatile than an indoor wedding ceremony. With this in mind, the Pavilion has been expertly crafted with a green oak frame. The hand-cut fish scale reclaimed slate tiles are then topped with a copper weathervane. It's no wonder more and more couples are opting to say their vows outside. With the option of personalising the Log Shed Bar to suit your requirements, you could opt for a gin bar or a cocktail bar. This upgrade easily transforms a standard drinks service into something which people will truly remember and talk about. During those long summer evenings, this space can also be used to serve your evening food. The Log Shed Bar comprises a stone-baked pizza oven as well as a BBQ, meaning that your wedding can be totally unique! Set within whimsical woodland, our fire-pit is a fantastic location to entertain your guests when the sun has set. With marshmallows, the finest hot chocolate and liqueurs, entertain your guests under a canopy of stars.

Baddow Park Events Limited,  
Baddow Park House,  
West Hanningfield Road  
Great Baddow. Essex CM2 7SY

**Telephone:** 01245 473969

**eMail:**  
office@baddowparkhouse.co.uk

**Online:**  
www.baddowparkhouse.co.uk